

**"If the system does not allow for vertical movements, gait is markedly distorted. The subject may still be able to move on the treadmill, since the walking surface is moving below him, but this unnatural gait is not the goal of therapy."** - Stated in 2000 VA Hospital Study\*

# Biodex Offset Unweighing System

Single point suspension permits functional pelvic rotation and versatility when walking, side-stepping, retro-walking and turning

Dynamic suspension allows for natural vertical displacement of center of gravity

Attachment rings - on support vest allow single or two-point pelvic stabilization when desired

Real time digital scale displays off-loaded weight in pounds or kilograms

Unweighing Harness fits a variety of patients

Patented off-loading mechanism maintains constant force  
Simply dial in amount to offload

Two position handle for easy and efficient patient unloading

Adjust to fit 8' ceilings

Accommodates children and adults

If pelvic stabilization is required, the Biodex Unweighing System includes Pelvic Stabilization Straps to govern the degree of pelvic rotation. Stabilization straps are made of Thera-Band® and adjustable nylon hooks.

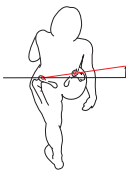


Offset frame design offers improved access to manually assist patient footfall and weight shift

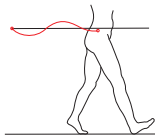
Removable and adjustable patient handrails

Large locking casters for effortless mobility over ground

Removable Therapist seats provide a place to sit during assistive exercise and provides a safer environment for therapist interaction



Pelvic rotation is a critical component of functional gait mechanics. As patients progress in therapy, the Biodex single-point suspension system allows functional pelvic rotation to occur.



Vertical displacement is also a critical component of functional gait mechanics. The Biodex dynamic suspension system allows up to 4" of vertical displacement which enables the patient to respond to ground reaction forces.

VA Hospitals recommendations support use of Biodex Unweighing Systems

**Recommendations:**

- Support up to 40% of patient's body weight
- Allow for 5.5cm of vertical movement to permit normal gait
- Report reliably to ensure the correct degree of unloading
- Enable easy adjustment to the amount of body weight support as the subject improves or fatigues during a training exercise

\* VA Hospital Study: Source: Wilson M, Qureshy H, Protas E, Holmes A, Krouskop T, Sherwood A.: Equipment Specifications for Supported Treadmill Ambulation Training. J of Rehab, Rehab and Development, Vol. 37 No. 4, July/August 2000, pp 415-422

Treat patients more efficiently and effectively...with **Biodex**  
For a closer look visit: [www.biodex.com/unweighing](http://www.biodex.com/unweighing)

# BIODEX

[www.biodex.com](http://www.biodex.com)

1-800-224-6339

Int'l 631-924-9000